

因为专业 所以卓越

服务无止境 诚信到永远



请扫描二维码添加微信

广杰厨业
Guang jie Kitchen



请扫描二维码添加微信

地址：山东滨州博兴曹王工业园区

电话：18706635222

广杰厨业有限公司



BUSINESS KITCHENWARE INDUSTRY SCALE ENTERPRISES 商用厨具行业规模企业

“工欲善其事，必先利其器” 宽敞的车间、先进的数控设备，为生产优质产品提供了保障。



意大利萨瓦尼尼柔性弯板中心

广杰厨业斥巨资引进全球最先进萨瓦尼尼(意大利)柔性弯板中心,实现了产品生产数字化、组装化、标准化、精益化。

Guangjie kitchen has invested heavily in introducing the world's most advanced Savanini (Italy) Flexible Bending Center, realizing the digitalization, assembly, standardization and leaning of product production.



现代化电子装配无尘车间

掌握核心,广杰厨业严格把控产品质量关,科学严格的方法保证了每件厨具产品的专业性和唯一性。

Master the core, Meijia Kitchen Kovich electromagnetic products strictly control product quality, scientific and strict methods to ensure the professionalism and uniqueness of Kovich products.



大功率激光切割机

广杰厨业采用先进的大功率激光切割机,实现了所以组件数字化,标准化、自动化,使产品工艺领先同行化,高标准工艺有目共睹。

Meijia kitchen industry adopts advanced high-power laser cutting machine, so that components are digitized, standardized and automated, so that the product technology is leading the peer, high-standard technology is obvious to all.



规范化生产 缔造完美产品

广杰厨业全面推行 7S 现场管理体系,对于塑造企业的形象、降低成本、准时交货、安全生产、高度的标准化、创造令人心旷神怡的工作场所、现场改善等方面发挥了巨大作用

The implementation of 7S site management system in the kitchen industry in guangjie has played an important role in shaping the image of the enterprise, reducing costs, delivering goods on time, safe production, high standardization, creating pleasant workplaces and improving the scene.



请扫描二维码加微信



厨房工程实景

精细的做工、卓越的品质，领先的制作工艺、时尚人性化的设计，以及国际机电、西餐等知名品牌的完美配套，令广杰承揽的星级整体厨房工程彰显出尊贵、健康，使用效果更是不同凡响，达到了国际化酒店厨房的高端体验。不论何时都是您的最爱……体验馆厨房展示让您在选择产品时更有参考价值。

Kitchen Engineering Scene

Fine workmanship, excellent quality, leading production process, fashionable and humanized design, as well as the perfect matching of international Electromechanical, Western food and other well-known brands, make the star rated overall kitchen project contracted by Beijing Baikeshow dignity, health, and outstanding use effect, reaching the high-end experience of international hotel kitchen. Your favorite at all times The kitchen display in the experience hall will give you more reference value when choosing products.





Stainless steel furniture combination

不锈钢厨房设备组合系列

- 全系列存储调理设备采用优质国标不锈钢
- 激光切割，数控成型，尺寸精准不走位
- 全系列人性化设计，方便实用
- 款式多样，品种多样，满足客户多方面的需求
- 外观保持与欧美同步，美观，设计合理
- All series of storage products are made from high quality Chinese standard stainless steel.
- Laser cutting stainless steel, to be shaped by digital control machine. The dimensions are very correct.
- Humanized, convenient and reasonable design.
- Multiple look and series meet customers' different need.
- American styles and European styles storage products with beautiful look and reasonable design are updated synchronized.



不锈钢厨房设备组合系列
stainless steel furniture combination
型号 (Model No.) :ZCZH-001



明档售饭系统

Buffet system

本产品为陈列展示柜,热柜运行温度为50—60℃,干热柜主要用于保温展示和销售各种烤、熏、煎、炸等熟食;湿热柜主要用于保温展示和销售成品热菜、蒸煮食品、熟肉制品等食品;常温柜主要用于展示和销售各类促销类熟食制品。

长度有1500mm/1800mm/2000mm三种基本规格,可根据卖场尺寸定做。

This product is designed for food display. The warm cabinet working temperature is around 50-60 °C. The dry and hot cabinet is mainly for warming and selling baked, fuming, and fried and other cooked food. Moisture and warm cabinets are used for displaying and selling finished hot dishes, steamed and boiled and prepared or other kind of cooked food. The room temperature cabinets are mainly for showing and selling food promotion.

This products can be in different length, such as 1500mm/1800mm/2000mm, and it can be also custom made by sales space.



H-CB 豪华茶吧

H-CB cabinet for Tea Station

材料(Material): 不锈钢(SUS)304/201 1.0~1.5mm

规格(Dimensions): 2100×750×1300mm



SCQJ-1三抽带墙架

Three drawers with shelf

尺寸/Dimension(mm): 450*700*850+ (600+300)

材料/Material: SUS201 or 304 0.8-1.2MM



CT抽屉

DRAWER FOR WORKING TABLE

材料MATERIAL:SUS304/201 0.8~1.2MM

CT-6085 500×560×520MM

CT-7085 550×660×520MM

CT-6090 500×560×570MM

CT-7090 550×560×570MM

不锈钢工作台系列

Stainless steel workbench series

广杰厨业有限公司

因为专业 所以卓越



请扫描二维码添加微信



YDLGZT-WS意大利组装工作台带裙板
Italy style working table with splashback
材料(Material):SUS304/201 0.8~1.2mm
with splashback or without splashback is also available.

型号 MODEL NO.	尺寸Dimension(MM)	包装Packing Size (M)
YDLGZT-1070WS	1000×700×850+100	1.03×0.73×0.2
YDLGZT-1270WS	1200×700×850+100	1.23×0.73×0.2
YDLGZT-1470WS	1400×700×850+100	1.43×0.73×0.2
YDLGZT-1570WS	1500×700×850+100	1.53×0.73×0.2
YDLGZT-1670WS	1600×700×850+100	1.63×0.73×0.2
YDLGZT-1870WS	1800×700×850+100	1.83×0.73×0.2
YDLGZT-2070WS	2000×700×850+100	2.03×0.73×0.2
YDLGZT-1060WS	1000×600×850+100	1.03×0.63×0.2
YDLGZT-1260WS	1200×600×850+100	1.23×0.63×0.2
YDLGZT-1460WS	1400×600×850+100	1.43×0.63×0.2
YDLGZT-1560WS	1500×600×850+100	1.53×0.63×0.2
YDLGZT-1660WS	1600×600×850+100	1.63×0.63×0.2
YDLGZT-1860WS	1800×600×850+100	1.83×0.63×0.2
YDLGZT-2060WS	2000×600×850+100	2.03×0.63×0.2



YDLGZT 意大利组装工作台带裙板不带后背
Italy style working table without splashback
材料(Material):SUS304/201 0.8~1.2mm
With splashback or without splashback is also available.

型号 MODEL NO.	尺寸Dimension(MM)	包装尺寸Packing Size(M)
YDLGZT-1070	1000×700×850	1.03×0.73×0.2
YDLGZT-1270	1200×700×850	1.23×0.73×0.2
YDLGZT-1470	1400×700×850	1.43×0.73×0.2
YDLGZT-1570	1500×700×850	1.53×0.73×0.2
YDLGZT-1670	1600×700×850	1.63×0.73×0.2
YDLGZT-1870	1800×700×850	1.83×0.73×0.2
YDLGZT-2070	2000×700×850	2.03×0.73×0.2
YDLGZT-1060	1000×600×850	1.03×0.63×0.2
YDLGZT-1260	1200×600×850	1.23×0.63×0.2
YDLGZT-1460	1400×600×850	1.43×0.63×0.2
YDLGZT-1560	1500×600×850	1.53×0.63×0.2
YDLGZT-1660	1600×600×850	1.63×0.63×0.2
YDLGZT-1860	1800×600×850	1.83×0.63×0.2
YDLGZT-2060	2000×600×850	2.03×0.63×0.2



ZZJYGZ 组裝双层平板工作台不带后背
Detachable design two layers working table without splashback
材料(Material):SUS304/201 0.8~1.2mm
with splashback or without splashback is also available.

型号 MODEL NO.	尺寸Dimension(MM)	包装Packing Size(M)
ZZJYGZ-1070	1000×700×850	1.03×0.73×0.2
ZZJYGZ-1270	1200×700×850	1.23×0.73×0.2
ZZJYGZ-1470	1400×700×850	1.43×0.73×0.2
ZZJYGZ-1570	1500×700×850	1.53×0.73×0.2
ZZJYGZ-1670	1600×700×850	1.63×0.73×0.2
ZZJYGZ-1870	1800×700×850	1.83×0.73×0.2
ZZJYGZ-2070	2000×700×850	2.03×0.73×0.2
ZZJYGZ-1060	1000×600×850	1.03×0.63×0.2
ZZJYGZ-1260	1200×600×850	1.23×0.63×0.2
ZZJYGZ-1460	1400×600×850	1.43×0.63×0.2
ZZJYGZ-1560	1500×600×850	1.53×0.63×0.2
ZZJYGZ-1660	1600×600×850	1.63×0.63×0.2
ZZJYGZ-1860	1800×600×850	1.83×0.63×0.2
ZZJYGZ-2060	2000×600×850	2.03×0.63×0.2



ZZJYGZ-WS组裝双层平板工作台带后背
Detachable design two layers working table with splashback
材料(MATERIAL):SUS304/201 0.8~1.2MM
with splashback or without splashback is also available.

型号 MODEL NO.	尺寸Dimension(MM)	包装Packing Size(M)
ZZJYGZ-1070WS	1000×700×850+100	1.03×0.73×0.21
ZZJYGZ-1270WS	1200×700×850+100	1.23×0.73×0.21
ZZJYGZ-1470WS	1400×700×850+100	1.43×0.73×0.21
ZZJYGZ-1570WS	1500×700×850+100	1.53×0.73×0.21
ZZJYGZ-1670WS	1600×700×850+100	1.63×0.73×0.21
ZZJYGZ-1870WS	1800×700×850+100	1.83×0.73×0.21
ZZJYGZ-2070WS	2000×700×850+100	2.03×0.73×0.21
ZZJYGZ-1060WS	1000×600×850+100	1.03×0.63×0.21
ZZJYGZ-1260WS	1200×600×850+100	1.23×0.63×0.21
ZZJYGZ-1460WS	1400×600×850+100	1.43×0.63×0.21
ZZJYGZ-1560WS	1500×600×850+100	1.53×0.63×0.21
ZZJYGZ-1660WS	1600×600×850+100	1.63×0.63×0.21
ZZJYGZ-1860WS	1800×600×850+100	1.83×0.63×0.21
ZZJYGZ-2060WS	2000×600×850+100	2.03×0.63×0.21



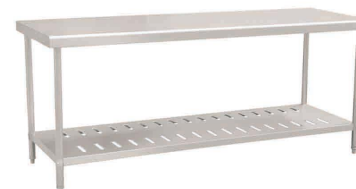
ZZFGGZT-WS 方管组裝工作台
Detachable design square tube working table
材料(Material):SUS304/201 0.8~1.2mm

型号 MODEL NO.	尺寸Dimension(MM)	包装Packing Size(M)
ZZFGGZT-1070WS	1000×700×850+100	1.03×0.73×0.21
ZZFGGZT-1270WS	1200×700×850+100	1.23×0.73×0.21
ZZFGGZT-1470WS	1400×700×850+100	1.43×0.73×0.21
ZZFGGZT-1570WS	1500×700×850+100	1.53×0.73×0.21
ZZFGGZT-1670WS	1600×700×850+100	1.63×0.73×0.21
ZZFGGZT-1870WS	1800×700×850+100	1.83×0.73×0.21
ZZFGGZT-2070WS	2000×700×850+100	2.03×0.73×0.21
ZZFGGZT-1060WS	1000×600×850+100	1.03×0.63×0.21
ZZFGGZT-1260WS	1200×600×850+100	1.23×0.63×0.21
ZZFGGZT-1460WS	1400×600×850+100	1.43×0.63×0.21
ZZFGGZT-1560WS	1500×600×850+100	1.53×0.63×0.21
ZZFGGZT-1660WS	1600×600×850+100	1.63×0.63×0.21
ZZFGGZT-1860WS	1800×600×850+100	1.83×0.63×0.21
ZZFGGZT-2060WS	2000×600×850+100	2.03×0.63×0.21



ZZFGGZT 方管组裝工作台
Detachable design square tube working table
材料(Material):SUS304/201 0.8~1.2mm

型号 MODEL NO.	尺寸Dimension(MM)	包装Packing Size(M)
ZZFGGZT-1070	1000×700×850	1.03×0.73×0.2
ZZFGGZT-1270	1200×700×850	1.23×0.73×0.2
ZZFGGZT-1470	1400×700×850	1.43×0.73×0.2
ZZFGGZT-1570	1500×700×850	1.53×0.73×0.2
ZZFGGZT-1670	1600×700×850	1.63×0.73×0.2
ZZFGGZT-1870	1800×700×850	1.83×0.73×0.2
ZZFGGZT-2070	2000×700×850	2.03×0.73×0.2
ZZFGGZT-1060	1000×600×850	1.03×0.63×0.2
ZZFGGZT-1260	1200×600×850	1.23×0.63×0.2
ZZFGGZT-1460	1400×600×850	1.43×0.63×0.2
ZZFGGZT-1560	1500×600×850	1.53×0.63×0.2
ZZFGGZT-1660	1600×600×850	1.63×0.63×0.2
ZZFGGZT-1860	1800×600×850	1.83×0.63×0.2
ZZFGGZT-2060	2000×600×850	2.03×0.63×0.2



JYCKDZT 组裝双层冲孔工作台不带后背
Detachable design working table with hole without splashback
材料(MATERIAL):SUS304/201 0.8~1.2MM
With splashback or without splashback is also available.

型号 MODEL NO.	尺寸Dimension(MM)	包装Packing Size(M)
JYCKGZT-1070	1000×700×850	1.03×0.73×0.2
JYCKGZT-1270	1200×700×850	1.23×0.73×0.2
JYCKGZT-1470	1400×700×850	1.43×0.73×0.2
JYCKGZT-1570	1500×700×850	1.53×0.73×0.2
JYCKGZT-1670	1600×700×850	1.63×0.73×0.2
JYCKGZT-1870	1800×700×850	1.83×0.73×0.2
JYCKGZT-2070	2000×700×850	2.03×0.73×0.2
JYCKGZT-1060	1000×600×850	1.03×0.63×0.2
JYCKGZT-1260	1200×600×850	1.23×0.63×0.2
JYCKGZT-1460	1400×600×850	1.43×0.63×0.2
JYCKGZT-1560	1500×600×850	1.53×0.63×0.2
JYCKGZT-1660	1600×600×850	1.63×0.63×0.2
JYCKGZT-1860	1800×600×850	1.83×0.63×0.2
JYCKGZT-2060	2000×600×850	2.03×0.63×0.2



JYCKGZT-WS 组裝双层冲孔工作台带后背
Detachable design working table with hole with splashback
材料(MATERIAL):SUS304/201 0.8~1.2MM
With splashback or without splashback is also available.

型号 MODEL NO.	尺寸Dimension(MM)	包装Packing Size(M)
JYCKGZT-1070WS	1000×700×850+100	1.03×0.73×0.21
JYCKGZT-1270WS	1200×700×850+100	1.23×0.73×0.21
JYCKGZT-1470WS	1400×700×850+100	1.43×0.73×0.21
JYCKGZT-1570WS	1500×700×850+100	1.53×0.73×0.21
JYCKGZT-1670WS	1600×700×850+100	1.63×0.73×0.21
JYCKGZT-1870WS	1800×700×850+100	1.83×0.73×0.21
JYCKGZT-2070WS	2000×700×850+100	2.03×0.73×0.21
JYCKGZT-1060WS	1000×600×850+100	1.03×0.63×0.21
JYCKGZT-1260WS	1200×600×850+100	1.23×0.63×0.21
JYCKGZT-1460WS	1400×600×850+100	1.43×0.63×0.21
JYCKGZT-1560WS	1500×600×850+100	1.53×0.63×0.21
JYCKGZT-1660WS	1600×600×850+100	1.63×0.63×0.21
JYCKGZT-1860WS	1800×600×850+100	1.83×0.63×0.21
JYCKGZT-2060WS	2000×600×850+100	2.03×0.63×0.21



请扫描二维码添加微信



ZZJYGZ-3组装三层平板工作台不带后背
Detachable design three layers working table without splashback
材料(MATERIAL):SUS304/201 0.8~1.2MM
With splashback or without splashback is also available.

型号 MODEL NO.	尺寸Dimension(MM)	包装Packing Size(M)
ZZJYGZ-1070-3	1000×700×850	1.03×0.73×0.25
ZZJYGZ-1270-3	1200×700×850	1.23×0.73×0.25
ZZJYGZ-1470-3	1400×700×850	1.43×0.73×0.25
ZZJYGZ-1570-3	1500×700×850	1.53×0.73×0.25
ZZJYGZ-1670-3	1600×700×850	1.63×0.73×0.25
ZZJYGZ-1870-3	1800×700×850	1.83×0.73×0.25
ZZJYGZ-2070-3	2000×700×850	2.03×0.73×0.25
ZZJYGZ-1060-3	1000×600×850	1.03×0.63×0.25
ZZJYGZ-1260-3	1200×600×850	1.23×0.63×0.25
ZZJYGZ-1460-3	1400×600×850	1.43×0.63×0.25
ZZJYGZ-1560-3	1500×600×850	1.53×0.63×0.25
ZZJYGZ-1660-3	1600×600×850	1.63×0.63×0.25
ZZJYGZ-1860-3	1800×600×850	1.83×0.63×0.25
ZZJYGZ-2060-3	2000×600×850	2.03×0.63×0.25



ZZJYGZ-3-WS 组装式三层工作台带后背
Detachable design three layers working table with splashback
材料(MATERIAL):SUS304/201 0.8~1.2MM
with splashback or without splashback is also available.

型号 MODEL NO.	尺寸Dimension(MM)	包装Packing Size(M)
ZZJYGZ-1070WS-3	1000×700×850+100	1.03×0.73×0.25
ZZJYGZ-1270WS-3	1200×700×850+100	1.23×0.73×0.25
ZZJYGZ-1470WS-3	1400×700×850+100	1.43×0.73×0.25
ZZJYGZ-1570WS-3	1500×700×850+100	1.53×0.73×0.25
ZZJYGZ-1670WS-3	1600×700×850+100	1.63×0.73×0.25
ZZJYGZ-1870WS-3	1800×700×850+100	1.83×0.73×0.25
ZZJYGZ-2070WS-3	2000×700×850+100	2.03×0.73×0.25
ZZJYGZ-1060WS-3	1000×600×850+100	1.03×0.63×0.25
ZZJYGZ-1260WS-3	1200×600×850+100	1.23×0.63×0.25
ZZJYGZ-1460WS-3	1400×600×850+100	1.43×0.63×0.25
ZZJYGZ-1560WS-3	1500×600×850+100	1.53×0.63×0.25
ZZJYGZ-1660WS-3	1600×600×850+100	1.63×0.63×0.25
ZZJYGZ-1860WS-3	1800×600×850+100	1.83×0.63×0.25
ZZJYGZ-2060WS-3	2000×600×850+100	2.03×0.63×0.25



YDLZZLM-1070WS 组装单拉门工作台无后背
Italy style storage cabinet with sliding door without splashback
材料(MATERIAL):SUS304/201 0.8~1.2mm
with splashback or without splashback is also available.

型号 MODEL NO.	尺寸Dimension(MM)	包装尺寸Packing Size(M)
YDLZZLM-1070	1000×700×850	1.11×0.75×0.25
YDLZZLM-1270	1200×700×850	1.31×0.75×0.25
YDLZZLM-1470	1400×700×850	1.51×0.75×0.25
YDLZZLM-1570	1500×700×850	1.61×0.75×0.25
YDLZZLM-1670	1600×700×850	1.71×0.75×0.25
YDLZZLM-1870	1800×700×850	1.91×0.75×0.25
YDLZZLM-2070	2000×700×850	2.11×0.75×0.25
YDLZZLM-1060	1000×600×850	1.11×0.65×0.25
YDLZZLM-1260	1200×600×850	1.31×0.65×0.25
YDLZZLM-1460	1400×600×850	1.51×0.65×0.25
YDLZZLM-1560	1500×600×850	1.61×0.65×0.25
YDLZZLM-1660	1600×600×850	1.71×0.65×0.25
YDLZZLM-1860	1800×600×850	1.91×0.65×0.25
YDLZZLM-2060	2000×600×850	2.11×0.65×0.25



YDLZZLM-1070WS 组装单拉门工作台带后背
Italy style storage cabinet with sliding door and splashback
材料(MATERIAL):SUS304/201 0.8~1.2mm
with splashback or without splashback is also available.

型号 MODEL NO.	尺寸Dimension(MM)	包装Packing Size(M)
YDLZZLM-1070WS	1000×700×850+100	1.11×0.75×0.25
YDLZZLM-1270WS	1200×700×850+100	1.31×0.75×0.25
YDLZZLM-1470WS	1400×700×850+100	1.51×0.75×0.25
YDLZZLM-1570WS	1500×700×850+100	1.61×0.75×0.25
YDLZZLM-1670WS	1600×700×850+100	1.71×0.75×0.25
YDLZZLM-1870WS	1800×700×850+100	1.91×0.75×0.25
YDLZZLM-2070WS	2000×700×850+100	2.11×0.75×0.25
YDLZZLM-1060WS	1000×600×850+100	1.11×0.65×0.25
YDLZZLM-1260WS	1200×600×850+100	1.31×0.65×0.25
YDLZZLM-1460WS	1400×600×850+100	1.51×0.65×0.25
YDLZZLM-1560WS	1500×600×850+100	1.61×0.65×0.25
YDLZZLM-1660WS	1600×600×850+100	1.71×0.65×0.25
YDLZZLM-1860WS	1800×600×850+100	1.91×0.65×0.25
YDLZZLM-2060WS	2000×600×850+100	2.11×0.65×0.25



JAZGZT 聚氨酯板工作台
Chopping table
材料(MATERIAL):SUS304/201 0.8~1.2mm

型号 MODEL NO.	尺寸Dimension(MM)	包装Packing Size(M)
JAZGZT-550	500×500×850	0.6×0.6×0.93
JAZGZT-870	800×700×850	0.9×0.8×0.2
JAZGZT-1070	1000×700×850	1.1×0.8×0.2
JAZGZT-1270	1200×700×850	1.3×0.8×0.2
JAZGZT-1570	1500×700×850	1.6×0.8×0.2
JAZGZT-1870	1800×700×850	1.9×0.8×0.2
JAZGZT-2070	2000×700×850	2.1×0.8×0.2
JAZGZT-860	800×600×850	0.9×0.7×0.2
JAZGZT-1060	1000×600×850	1.1×0.7×0.2
JAZGZT-1260	1200×600×850	1.3×0.7×0.2
JAZGZT-1560	1500×600×850	1.6×0.7×0.2
JAZGZT-1860	1800×600×850	1.9×0.7×0.2
JAZGZT-2060	2000×600×850	2.1×0.7×0.2



SQUARE AND ROUND TUBES ARE OPTIONAL



OBDSLMGZT 欧版双门拉门工作台
Storage cabinet with two sliding doors without splashback
材料(MATERIAL):SUS304/201 0.8~1.2mm

型号 MODEL NO.	尺寸Dimension(MM)	包装Packing Size(M)
OBDSLMGZT-1070	1000×700×850	1.1×0.8×0.9
OBDSLMGZT-1270	1200×700×850	1.3×0.8×0.9
OBDSLMGZT-1470	1400×700×850	1.5×0.8×0.9
OBDSLMGZT-1570	1500×700×850	1.6×0.8×0.9
OBDSLMGZT-1670	1600×700×850	1.7×0.8×0.9
OBDSLMGZT-1870	1800×700×850	1.9×0.8×0.9
OBDSLMGZT-2070	2000×700×850	2.1×0.8×0.9
OBDSLMGZT-1060	1000×600×850	1.1×0.7×0.9
OBDSLMGZT-1260	1200×600×850	1.3×0.7×0.9
OBDSLMGZT-1460	1400×600×850	1.5×0.7×0.9
OBDSLMGZT-1560	1500×600×850	1.6×0.7×0.9
OBDSLMGZT-1660	1600×600×850	1.7×0.7×0.9
OBDSLMGZT-1860	1800×600×850	1.9×0.7×0.9
OBDSLMGZT-2060	2000×600×850	2.1×0.7×0.9



OBDSLMGZT-WS 欧版双门拉门工作台带后背
Storage cabinet with two sliding doors with splashback
材料(MATERIAL):SUS304/201 0.8~1.2mm

型号 MODEL NO.	尺寸Dimension(MM)	包装Packing Size(M)
OBDSLMGZT-1070WS	1000×700×850+100	1.1×0.8×1.0
OBDSLMGZT-1270WS	1200×700×850+100	1.3×0.8×1.0
OBDSLMGZT-1470WS	1400×700×850+100	1.5×0.8×1.0
OBDSLMGZT-1570WS	1500×700×850+100	1.6×0.8×1.0
OBDSLMGZT-1670WS	1600×700×850+100	1.7×0.8×1.0
OBDSLMGZT-1870WS	1800×700×850+100	1.9×0.8×1.0
OBDSLMGZT-2070WS	2000×700×850+100	2.1×0.8×1.0
OBDSLMGZT-1060WS	1000×600×850+100	1.1×0.7×1.0
OBDSLMGZT-1260WS	1200×600×850+100	1.3×0.7×1.0
OBDSLMGZT-1460WS	1400×600×850+100	1.5×0.7×1.0
OBDSLMGZT-1560WS	1500×600×850+100	1.6×0.7×1.0
OBDSLMGZT-1660WS	1600×600×850+100	1.7×0.7×1.0
OBDSLMGZT-1860WS	1800×600×850+100	1.9×0.7×1.0
OBDSLMGZT-2060WS	2000×600×850+100	2.1×0.7×1.0



请扫描二维码添加微信



GZT-TSM 铁松木桌

Table to making bread

材料(Material) : 不锈钢(SUS)304/201 1.0~1.5MM
规格(Dimensions) : 1800× 800 ×800
2000×1000×800



QPT 切配台

Vegetable preparation table

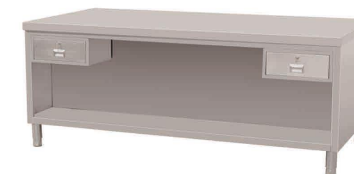
材料(Material) : 不锈钢(SUS)304/201 1.0~1.5MM
规格(Dimensions) : 1800×1050×900



GZT-SC 电热吹风双敞门打荷台

Warmer cabinet with double hinged doors

材料(Material) : 不锈钢(SUS)304/201 1.0~1.5MM
规格(Dimensions) : 2000×1000×860
2200×1050×860



LCG-FM 翻门带抽屉

Cabinet with two drawers

材料(Material) : 不锈钢(SUS)304/201 1.0~1.5MM
规格(Dimensions) : 1800×800×800
1800×760×800
2000×1000×800



SCCKGZT 双层冲孔平板工作台

Working Table With Punched Hole Without Splashback

材料(Material) : 不锈钢(SUS)304/201 0.8~1.2MM
规格(Dimensions) : 1800× 800 ×800



GZT-XHG 双层下花格工作台

Working table slatted lower shelf no splash back

材料(Material) : 不锈钢(SUS) : 不锈钢304/201 1.0~1.5MM
规格(Dimensions) : 1800×800×800
1500×800×800
1800×760×800
1500×760×800



GZT-SCDT 三抽单通工作台

Cabinet with 3-drawer and sliding doors

材料(Material) : 不锈钢(SUS)304/201 1.0~1.5MM
规格(Dimensions) : 1800×800×800
1800×760×800



GZT-FM 翻门工作台

Work table with Up-down door no splash back

材料(Material) : 不锈钢(SUS)304/201 1.0~1.5MM
规格(Dimensions) : 1800×800×800
1800×760×800
2000×1000×800



SCPBGZT 三层平板工作台

Three Layer Working Table Without Splashback

材料(Material) : 不锈钢(SUS)304/201 0.8~1.2MM
规格(Dimensions) : 1800× 800 ×800



GZT-SC 双层工作台

Double layers work table no splash back

材料(Material) : 不锈钢(SUS)304/201 1.0~1.5MM
规格(Dimensions) : 1800×800×800
1500×800×800
1500×760×800
1800×760×800



GZT-ST 双通工作台

Cabinet with double sliding doors

材料(Material) : 不锈钢(SUS)304/201 1.0~1.5MM
规格(Dimensions) : 1800×800×800
1800×760×800
2000×1000×800



GZT-MA 木案工作台

Wooden work table

材料(Material) : 不锈钢304/201 1.0~1.5MM
规格(Dimensions) : 1800×800×800
1500×800×800
1800×760×800
1500×760×800

不锈钢水池槽体和水池台面系列

Stainless steel pool body and pool countertop series

广杰厨业有限公司

因为专业 所以卓越



请扫描二维码添加微信



MSKM 拉伸槽体中间下水口
Mould made sink bowl with drainer in the middle
型号 (Model) : MSKM-4040 400*400*250MM
MSKM-5050 500*500*300MM



MSKC 拉伸槽体角位下水口
Mould made sink bowl with drainer in the corner
型号 (Model) : MSKC-4040 400*400*250MM
MSKC-5050 500*500*300MM



MS1B 单星水池台面

Single sink top

型号Model NO.	尺寸Dimension	槽体尺寸Bowl Size
MS1B-7070	700*700MM	500*500*300MM
MS1B-6060	600*600MM	400*400*250MM



MSKC 拉伸槽体角位下水口
Mould made sink bowl with drainer in the corner
型号 (Model) : MSKC-5040 500*400*250MM
MSKC-4050 400*500*250MM



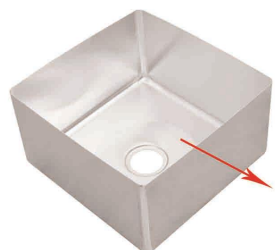
MSKC 拉伸槽体角位下水口
Mould made sink bowl with drainer in the corner
型号 (Model) : MSKC-6050 600*500*300MM



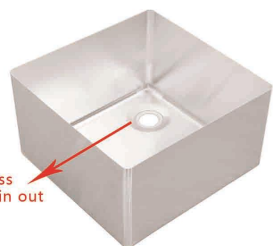
MS2B 双星水池台面

Double sink top

型号Model NO.	尺寸Dimension	槽体尺寸Bowl Size
MS2B1260	1200*600MM	500*400*250MM
MS2B1270	1200*700MM	500*500*300MM



WSKM 焊接槽体中间下水口
Welding style sink bowl with drainer in the middle
型号 (Model) : WSKM-4040 400*400*300MM
WSKM-5040 500*400*300MM
WSKM-5050 500*500*300MM
WSKM-6050 600*500*300MM
All size available



WSKC 焊接槽体角位下水口
Welding style sink bowl with drainer in the corner
型号 (Model) : WSKC-4040 400*400*300MM
WSKC-5040 500*400*300MM
WSKC-5050 500*500*300MM
WSKC-6050 600*500*300MM
All size available



MS1B-L 单星左沥水水池台面

Single sink with left drainer top

型号Model NO.	尺寸Dimension	槽体尺寸Bowl Size	沥水板尺寸Drainer Size
MS1B1070L	1000*700MM	500*500*300MM	310*375MM
MS1B1060L	1000*600MM	400*400*250MM	350*375MM
MS1B1270L	1200*700MM	500*500*300MM	475*515MM
MS1B1260L	1200*600MM	400*400*250MM	480*415MM



MS1B-R 单星右沥水水池台面

Single sink with right drainer top

型号Model NO.	尺寸Dimension	槽体尺寸Bowl Size	沥水板尺寸Drainer Size
MS1B1070R	1000*700MM	500*500*300MM	310*375MM
MS1B1060R	1000*600MM	400*400*250MM	350*375MM
MS1B1270R	1200*700MM	500*500*300MM	475*515MM
MS1B1260R	1200*600MM	400*400*250MM	480*415MM

Special mould press
Easy for water drain out



MS1B-L 单星左沥水水池台面

Single sink with left drainer top

型号Model NO.	尺寸Dimension	槽体尺寸Bowl Size	沥水板尺寸Drainer Size
MS1B1470L	1400*700MM	600*500*300MM	475*515MM
MS1B1460L	1400*600MM	500*400*250MM	480*415MM



MS2B-L 双星左沥水水池台面

Double sinks with left drainer top

型号Model NO.	尺寸Dimension	槽体尺寸Bowl Size	沥水板尺寸Drainer Size
MS2B1670L	1600*700MM	500*500*300MM	350*375MM
MS2B1660L	1600*600MM	400*400*250MM	350*375MM



MS1B-R 单星右沥水水池台面

Single sink with right drainer top

型号Model NO.	尺寸Dimension	槽体尺寸Bowl Size	沥水板尺寸Drainer Size
MS1B1470R	1400*700MM	600*500*300MM	475*515MM
MS1B1460R	1400*600MM	500*400*250MM	480*415MM



MS2B-R 双星右沥水水池台面

Double sinks with right drainer top

型号Model NO.	尺寸Dimension	槽体尺寸Bowl Size	沥水板尺寸Drainer Size
MS2B1670R	1600*700MM	500*500*300MM	350*375MM
MS2B1660R	1600*600MM	400*400*250MM	350*375MM



MS2B-L 双星左沥水水池台面

Double sinks with left drainer top

型号Model NO.	尺寸Dimension	槽体尺寸Bowl Size	沥水板尺寸Drainer Size
MS2B1470L	1400*700MM	400*500*250MM	350*375MM
MS2B1460L	1400*600MM	400*400*250MM	350*375MM



MS2B-L 双星左沥水水池台面

Double sinks with left drainer top

型号Model NO.	尺寸Dimension	槽体尺寸Bowl Size	沥水板尺寸Drainer Size
MS2B1870L	1800*700MM	500*500*300MM	475*515MM
MS2B1860L	1800*600MM	500*400*250MM	480*415MM
MS2B2070L	2000*700MM	600*500*300MM	475*515MM
MS2B2060L	2000*600MM	500*400*250MM	480*415MM



MS2B-R 双星右沥水水池台面

Double sinks with right drainer top

型号Model NO.	尺寸Dimension	槽体尺寸Bowl Size	沥水板尺寸Drainer Size
MS2B1470R	1400*700MM	400*500*250MM	350*375MM
MS2B1460R	1400*600MM	400*400*250MM	350*375MM



MS2B-R 双星右沥水水池台面

Double sinks with right drainer top

型号Model NO.	尺寸Dimension	槽体尺寸Bowl Size	沥水板尺寸Drainer Size
MS2B1870R	1800*700MM	500*500*300MM	475*515MM
MS2B1860R	1800*600MM	500*400*250MM	480*415MM
MS2B2070R	2000*700MM	600*500*300MM	475*515MM
MS2B2060R	2000*600MM	500*400*250MM	480*415MM

A款水池系列：欧版水池长腿带裙板

A-type pool series: European version pool with long legs and skirt board

广杰厨业有限公司

因为专业 所以卓越



请扫描二维码添加微信



ZZDSDX 组装欧式单星水池

European style single sink with under shelf

型号Model NO.	尺寸Dimension	槽体尺寸Bowl Size
ZZDSDX-7070	700*700*850+100MM	500*500*300MM
ZZDSDX-7060	600*600*850+100MM	400*400*250MM



ZZDSDZ 组装欧式单星左沥水水池

European style single sink with left board with under shelf

型号Model NO.	尺寸Dimension	槽体尺寸Bowl Size	沥水板尺寸Drainer Size
ZZDSDZ-1070	1000*700*(850+100)MM	500*500*300MM	310*375MM
ZZDSDZ-1060	1000*600*(850+100)MM	400*400*250MM	350*375MM
ZZDSDZ-1270	1200*700*(850+100)MM	500*500*300MM	475*515MM
ZZDSDZ-1260	1200*600*(850+100)MM	500*400*250MM	475*415MM
ZZDSDZ-1470	1400*700*(850+100)MM	600*500*300MM	475*515MM
ZZDSDZ-1460	1400*600*(850+100)MM	500*400*250MM	475*415MM



ZZDSDY 组装欧式单星右沥水水池

European style single sink with right board with under shelf

型号Model NO.	尺寸Dimension	槽体尺寸Bowl Size	沥水板尺寸Drainer Size
ZZDSDY-1070	1000*700*(850+100)MM	500*500*300MM	310*375MM
ZZDSDY-1060	1000*600*(850+100)MM	400*400*250MM	350*375MM
ZZDSDY-1270	1200*700*(850+100)MM	500*500*300MM	475*515MM
ZZDSDY-1260	1200*600*(850+100)MM	500*400*250MM	475*415MM
ZZDSDY-1470	1400*700*(850+100)MM	600*500*300MM	475*515MM
ZZDSDY-1460	1400*600*(850+100)MM	500*400*250MM	475*415MM



ZZDSSZ 组装欧式双星左沥水水池

European style double sinks with left board with under shelf

型号Model NO.	尺寸Dimension	槽体尺寸Bowl Size	沥水板尺寸Drainer Size
ZZDSSZ-1470	1400*700*(850+100)MM	400*500*250MM	350*375MM
ZZDSSZ-1460	1400*600*(850+100)MM	400*400*250MM	350*375MM



ZZDSSY 组装欧式双星右沥水水池

European style double sinks with right board with under shelf

型号Model NO.	尺寸Dimension	槽体尺寸Bowl Size	沥水板尺寸Drainer Size
ZZDSSY-1470	1400*700*(850+100)MM	400*500*250MM	350*375MM
ZZDSSY-1460	1400*600*(850+100)MM	400*400*250MM	350*375MM



ZZDSSZ 组装欧式双星左沥水水池

European style double sinks with left board with under shelf

型号Model NO.	尺寸Dimension	槽体尺寸Bowl Size	沥水板尺寸Drainer Size
ZZDSSZ-1670	1600*700*(850+100)MM	500*500*300MM	350*375MM
ZZDSSZ-1660	1600*600*(850+100)MM	400*400*250MM	350*375MM
ZZDSSZ-1870	1800*700*(850+100)MM	500*500*300MM	475*515MM
ZZDSSZ-1860	1800*600*(850+100)MM	500*400*250MM	475*415MM
ZZDSSZ-2070	2000*700*(850+100)MM	600*500*300MM	475*515MM
ZZDSSZ-2060	2000*600*(850+100)MM	500*400*250MM	475*415MM



ZZDSSY 组装欧式双星右沥水水池

European style double sinks with right board with under shelf

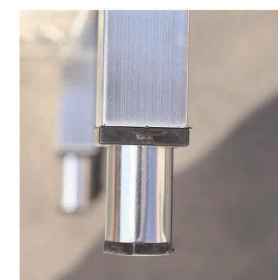
型号Model NO.	尺寸Dimension	槽体尺寸Bowl Size	沥水板尺寸Drainer Size
ZZDSSY-1670	1600*700*(850+100)MM	500*500*300MM	350*375MM
ZZDSSY-1660	1600*600*(850+100)MM	400*400*250MM	350*375MM
ZZDSSY-1870	1800*700*(850+100)MM	500*500*300MM	475*515MM
ZZDSSY-1860	1800*600*(850+100)MM	500*400*250MM	475*415MM
ZZDSSY-2070	2000*700*(850+100)MM	600*500*300MM	475*515MM
ZZDSSY-2060	2000*600*(850+100)MM	500*400*250MM	480*415MM



ZZDSSZY 组装欧式双星左右沥水水池

European style double sinks with left&right board with under shelf

型号Model NO.	尺寸Dimension	槽体尺寸Bowl Size	沥水板尺寸Drainer Size
ZZDSSZY-2070	2000*700*(850+100)MM	500*500*300MM	350*375MM
ZZDSSZY-2060	2000*600*(850+100)MM	400*400*250MM	350*375MM





DSGSDXSC 欧版柜式单星水池

European style single sink with cabinet

型号Model NO.	尺寸Dimension	槽体尺寸Bowl Size
DSGSDXSC-7070	700*700*(850+100)MM	500*500*300MM
DSGSDXSC-6060	600*600*(850+100)MM	400*400*250MM



DSGSDXZLS 欧版柜式单星左沥水水池

European style single sink with left board with cabinet

型号Model NO.	尺寸Dimension	槽体尺寸Bowl Size	沥水板尺寸Drainer Size
DSGSDXZLS-1070	1000*700*(850+100)MM	500*500*300MM	310*375MM
DSGSDXZLS-1060	1000*600*(850+100)MM	400*400*250MM	350*375MM
DSGSDXZLS-1270	1200*700*(850+100)MM	500*500*300MM	475*515MM
DSGSDXZLS-1260	1200*600*(850+100)MM	500*400*250MM	475*415MM
DSGSDXZLS-1470	1400*700*(850+100)MM	600*500*300MM	475*515MM
DSGSDXZLS-1460	1400*600*(850+100)MM	500*400*250MM	475*415MM



DSGSDYLS 欧版柜式单星右沥水水池

European style single sink with right board with cabinet

型号Model NO.	尺寸Dimension	槽体尺寸Bowl Size	沥水板尺寸Drainer Size
DSGSDYLS-1070	1000*700*(850+100)MM	500*500*300MM	310*375MM
DSGSDYLS-1060	1000*600*(850+100)MM	400*400*250MM	350*375MM
DSGSDYLS-1270	1200*700*(850+100)MM	500*500*300MM	475*515MM
DSGSDYLS-1260	1200*600*(850+100)MM	500*400*250MM	475*415MM
DSGSDYLS-1470	1400*700*(850+100)MM	600*500*300MM	475*515MM
DSGSDYLS-1460	1400*600*(850+100)MM	500*400*250MM	475*415MM



DSGSSXZLS 欧版柜式双星左沥水水池

European style double sinks with left board with cabinet

型号Model NO.	尺寸Dimension	槽体尺寸Bowl Size	沥水板尺寸Drainer Size
DSGSSXZLS-1670	1600*700*(850+100)MM	500*500*300MM	350*375MM
DSGSSXZLS-1660	1600*600*(850+100)MM	400*400*250MM	350*375MM
DSGSSXZLS-1870	1800*700*(850+100)MM	500*500*300MM	475*515MM
DSGSSXZLS-1860	1800*600*(850+100)MM	500*400*250MM	475*415MM
DSGSSXZLS-2070	2000*700*(850+100)MM	600*500*300MM	475*515MM
DSGSSXZLS-2060	2000*600*(850+100)MM	500*400*250MM	475*415MM



DSGSSXYLS 欧版柜式双星右沥水水池

European style double sinks with right board with cabinet

型号Model NO.	尺寸Dimension	槽体尺寸Bowl Size	沥水板尺寸Drainer Size
DSGSSXYLS-1670	1600*700*(850+100)MM	500*500*300MM	350*375MM
DSGSSXYLS-1660	1600*600*(850+100)MM	400*400*250MM	350*375MM
DSGSSXYLS-1870	1800*700*(850+100)MM	500*500*300MM	475*515MM
DSGSSXYLS-1860	1800*600*(850+100)MM	500*400*250MM	475*415MM
DSGSSXYLS-2070	2000*700*(850+100)MM	600*500*300MM	475*515MM
DSGSSXYLS-2060	2000*600*(850+100)MM	500*400*250MM	475*415MM



DSGSXZYLs 欧版柜式双星左右沥水水池

European style double sinks with left & right board with cabinet

型号Model NO.	尺寸Dimension	槽体尺寸Bowl Size	沥水板尺寸Drainer Size
DSGSXZYLs-2070	2000*700*(850+100)MM	500*500*300MM	350*375MM
DSGSXZYLs-2060	2000*600*(850+100)MM	400*400*250MM	350*375MM



ZZOSDX 组装欧版单星水池

European style single sink with under shelf

型号Model NO.	尺寸Dimension	槽体尺寸Bowl Size
ZZOSDX-7070	700*700*850+100MM	500*500*300MM
ZZOSDX-7060	600*600*850+100MM	400*400*300MM



ZZOSDZ 组装欧版单星左沥水水池

European style single sink with left board with under shelf

型号Model NO.	尺寸Dimension	槽体尺寸Bowl Size	沥水板尺寸Drainer Size
ZZOSDZ-1270	1200*700*(850+100)MM	500*500*300MM	475*515MM
ZZOSDZ-1260	1200*600*(850+100)MM	500*400*300MM	475*415MM



ZZOSDY 组装欧版单星右沥水水池

European style single sink with right board with under shelf

型号Model NO.	尺寸Dimension	槽体尺寸Bowl Size	沥水板尺寸Drainer Size
ZZOSDY-1270	1200*700*(850+100)MM	500*500*300MM	475*515MM
ZZOSDY-1260	1200*600*(850+100)MM	500*400*300MM	475*415MM



ZZOSSX 组装欧式双星水池

European style double sinks with under shelf

型号Model NO.	尺寸Dimension	槽体尺寸Bowl Size
ZZOSSX-1270	1200*700*(850+100)MM	500*500*300MM
ZZOSSX-1260	1200*600*(850+100)MM	500*400*300MM



请扫描二维码添加微信



ZZOSDDX 组装欧版大单星水池
European style single big sink with under shelf

型号Model NO.	尺寸Dimension	槽体尺寸Bowl Size
ZZOSDDX-1270	1200*700*(850+100)MM	1050*500*300MM
ZZOSDDX-1260	1200*600*(850+100)MM	1050*400*300MM



ZZOSSXZLS 组装欧版双星左沥水水池
European style double sinks with left board with under shelf

型号Model NO.	尺寸Dimension	槽体尺寸Bowl Size	沥水板尺寸Drainer Size
ZZOSSXZLS-1870	1800*700*(850+100)MM	500*500*300MM	475*515MM
ZZOSSXZLS-1860	1800*600*(850+100)MM	500*400*300MM	475*415MM



ZZOSSXYLS 组装欧版双星右沥水水池
European style double sinks with right board with under shelf

型号Model NO.	尺寸Dimension	槽体尺寸Bowl Size	沥水板尺寸Drainer Size
ZZOSSXYLS-1870	1800*700*(850+100)MM	500*500*300MM	475*515MM
ZZOSSXYLS-1860	1800*600*(850+100)MM	500*400*300MM	475*415MM



SG-XT 膝推式洗手星
Wash sink (Knee push)
材料(Material) : 不锈钢(SUS)304/201 0.8~1.2mm
规格(Dimensions) : 455*455*270+35mm



GQX-1 挂墙式洗手星
Wash sink(Wall-hung type)
尺寸/Dimension(mm): 455*455*270+100
材料/Material : SUS201 or 304 0.8-1.2MM



GQX-2 膝顶式洗手星
Wash sink (Knee push)
尺寸/Dimension(mm): 500*400*230+400
材料/Material : SUS201 or 304 0.8-1.2MM



XTSC-SP 膝顶式洗手星
Wash sink (Knee push)
(Include soap box and paper box)
尺寸/Dimension(mm): 500*400*230+400
材料/Material : SUS201 or 304 0.8-1.2MM



GQX-3 膝顶式洗手星
Wash sink (Knee push)
尺寸/Dimension(mm): 400*400*240+30
材料/Material : SUS201 or 304 0.8-1.2MM



JTSCG-5040 脚踏洗手池柜
Description:Single sink cabinet
尺寸/Dimentions:500*400*800+400MM



TBC-1 折叠拖把池
Description:Washing mop sink
尺寸/Dimentions:930*740*1550mmMM
包装Packing:101*61*14cm



请扫描二维码添加微信



VOID SPACE : 0.6M LENGTH

DXZLS 单星左沥水下嵌洗碗机水槽

Description:Single sink with left board with under shelf void space for dishwasher

型号 (Model No.) :	尺寸/Dimention(MM):
DXZLS-S1260	1200*600*850+100
DXZLS-S1270	1200*700*850+100
DXZLS-S1460	1400*600*850+100
DXZLS-S1470	1400*700*850+100



VOID SPACE : 0.6M LENGTH

DXZLS-SG 单星左沥水水池柜下嵌洗碗机

Description:Single sink cabinet with left board void space for dishwasher

型号 (MODEL NO.) :	尺寸/Dimention:
DXZLS-SG1260	1200*600*850+100MM
DXZLS-SG1270	1200*700*850+100MM
DXZLS-SG1460	1400*600*850+100MM
DXZLS-SG1470	1400*700*850+100MM



VOID SPACE : 0.6M LENGTH

DXYLS 单星右沥水下嵌洗碗机水槽

Description:Single sink with right board with under shelf void space for dishwasher

型号 (Model No.) :	尺寸/Dimention(MM):
DXYLS-S1260	1200*600*850+100
DXYLS-S1270	1200*700*850+100
DXYLS-S1460	1400*600*850+100
DXYLS-S1470	1400*700*850+100



VOID SPACE : 0.6M LENGTH

DXYLS-SG 单星右沥水水池柜下嵌洗碗机

Description:Single sink cabinet with right board void space for dishwasher

型号 (Model No.) :	尺寸/DIMENSIONS:
DXYLS-SG1260	1200*600*850+100MM
DXYLS-SG1270	1200*700*850+100MM
DXYLS-SG1460	1400*600*850+100MM
DXYLS-SG1470	1400*700*850+100MM



VOID SPACE : 0.6M LENGTH

SXZLS 双星左沥水下嵌洗碗机水槽

Description:Double sinks with left board with under shelf void space for dishwasher

型号 (Model No.):	尺寸/Dimention(MM):
SXZLS-S1660	1600*600*850+100
SXZLS-S1670	1600*700*850+100
SXZLS-S1860	1800*600*850+100
SXZLS-S1870	1800*700*850+100
SXZLS-S2060	2000*600*850+100
SXZLS-S2070	2000*700*850+100



SXYLS 双星右沥水水池柜下嵌洗碗机水槽

Description:Double sinks cabinet with right board void space for dishwasher

型号 (Model No.) :	尺寸/Dimention:
SXYLS-SG1660	1600*600*850+100
SXYLS-SG1670	1600*700*850+100
SXYLS-SG1860	1800*600*850+100
SXYLS-SG1870	1800*700*850+100
SXYLS-SG2060	2000*600*850+100
SXYLS-SG2070	2000*700*850+100



SXYLS 双星右沥水下嵌洗碗机水槽

Description:Double sinks with right board with under shelf void space for dishwasher

型号 (Model No.):	尺寸/Dimention(MM):
SXYLS-S1660	1600*600*850+100
SXYLS-S1670	1600*700*850+100
SXYLS-S1860	1800*600*850+100
SXYLS-S1870	1800*700*850+100
SXYLS-S2060	2000*600*850+100
SXYLS-S2070	2000*700*850+100



VOID SPACE : 0.6M LENGTH

SXZLS 双星左沥水水池柜下嵌洗碗机水槽

Description:Double sinks cabinet with left board void space for dishwasher

型号 (Model No.):	尺寸/Dimention:
SXZLS-SG1660	1600*600*850+100
SXZLS-SG1670	1600*700*850+100
SXZLS-SG1860	1800*600*850+100
SXZLS-SG1870	1800*700*850+100
SXZLS-SG2060	2000*600*850+100
SXZLS-SG2070	2000*700*850+100



请扫描二维码添加微信



SK-180LF 组装中式双星左沥水水池

Chinese style double sinks with left board

型号Model NO.	尺寸Dimension	槽体尺寸Bowl Size
SK-1870LF	1800*700*850+100MM	500*500*300MM
SK-1860LF	1800*600*850+100MM	500*400*300MM



ZZZS 组装中式双星右沥水水池

Chinese style double sinks with right board with under shelf

型号Model NO.	尺寸Dimension	槽体尺寸Bowl Size
ZZZSSYY-1870	1800*700*(850+100)MM	500*500*300MM
ZZZSSYY-1860	1800*600*(850+100)MM	500*500*300MM

THE DRAINER BOARD WITH WATER LINE



SK-180RB 组装中式双星右沥水水池

Chinese style double sinks with right board

型号Model NO.	尺寸Dimension	槽体尺寸Bowl Size
SK-1870RB	1800*700*850+100MM	500*500*300MM
SK-1860RB	1800*600*850+100MM	500*400*300MM



SK 组装中式单星水池

Chinese style single sink with under shelf

型号Model NO.	尺寸Dimension	槽体尺寸Bowl Size
SK-7070	700*700*850+100MM	500*500*300MM
SK-7060	600*600*850+100MM	400*400*300MM



ZZZS 组装中式单星左沥水水池

Chinese style single sink with left board without under shelf(front open)

型号Model NO.	尺寸Dimension	槽体尺寸Bowl Size
ZZZSDY-1070	1000*700*(850+100)MM	500*500*300MM
ZZZSDY-1060	1000*600*(850+100)MM	500*400*300MM
ZZSDSZ-1270	1200*700*(850+100)MM	500*500*300MM
ZZSDSZ-1260	1200*600*(850+100)MM	500*400*300MM



SK-120 组装中式双星水池

Chinese style double sinks with under shelf

型号Model NO.	尺寸Dimension	槽体尺寸Bowl Size
SK-1270	1200*700*850+100MM	500*500*300MM
SK-1260	1200*600*850+100MM	500*400*300MM



ZZZS 组装中式双星右沥水水池

Chinese style double sinks with right board without under shelf

型号Model NO.	尺寸Dimension	槽体尺寸Bowl Size
ZZZSSY-1870	1800*700*(850+100)MM	500*500*300MM
ZZZSSY-1860	1800*600*(850+100)MM	500*400*300MM



SK-120LF 组装中式单星左沥水水池

Chinese style single sink with left board with under shelf

型号Model NO.	尺寸Dimension	槽体尺寸Bowl Size
SK-1270LF	1200*700*850+100MM	500*500*300MM
SK-1260LF	1200*600*850+100MM	500*400*250MM



ZZZS 组装中式单星右沥水水池

Chinese style single sink with right board with under shelf

型号Model NO.	尺寸Dimension	槽体尺寸Bowl Size
ZZZSDYH-1070	1000*700*(850+100)MM	500*500*300MM
ZZZSDYH-1060	1000*600*(850+100)MM	500*400*300MM
ZZSDZH-1270	1200*700*(850+100)MM	500*500*300MM
ZZSDZH-1260	1200*600*(850+100)MM	500*400*300MM



SK-120RB 组装中式单星右沥水水池

Chinese style single sink with right board with under shelf

型号Model NO.	尺寸Dimension	槽体尺寸Bowl Size
SK-1270RB	1200*700*850+100MM	500*500*300MM
SK-1260RB	1200*600*850+100MM	500*400*250MM



请扫描二维码添加微信



PB 平板车
Welding style Trolley with flat board
材料(Material) : 不锈钢(SUS)304/201 1.0~1.5mm
规格(Dimensions) : 600*900*850mm



PBC 平板车
Flat board trolley
材料(Material) : 不锈钢(SUS)304/201 1.0~1.5mm
规格(Dimensions) : 600*900*900mm



TLT 三层收餐车
Three layer trolley
材料(Material) : 不锈钢(SUS)304/201 0.8~1.2MM
型号Model NO. 尺寸Dimension
TLT03-85 800*500*940MM
TLT03-105 1000*500*940MM
TLT03-106 1000*600*940MM
TLT03-126 1200*600*940MM



DLT 组装双层餐车
Double layer trolley
材料(Material) : 不锈钢(SUS)304/201 0.8~1.2MM
型号Model NO. 尺寸Dimension
DLT02-85 800*500*940MM
DLT02-105 1000*500*940MM
DLT02-106 1000*600*940MM
DLT02-126 1200*600*940MM



FT-6090 折叠平板车
Flat trolley with foldable design
材料(Material) : 不锈钢(SUS)304/201 0.8~1.2MM
规格(Dimensions) : 600*900*850MM



XSC-4555 洗酸小车
stainless steel cart for cleaning (De-
tergent & Sulfuric acid)
材料(Material) : SUS 304 only
尺寸/Dimensions:450*550*600MM



CSG-7070 残食柜带背连车
Cabinet to collect rubbish with trolley
材料(Material) : 不锈钢(SUS)304/201 0.8~1.2MM
规格(Dimensions) : 700*700*850+100MM



CSG-7070 残食柜连车
Cabinet to collect rubbish with trolley
材料(Material) : 不锈钢(SUS)304/201 1.0~1.5MM
规格(Dimensions) : 700*700*850MM



SWC-2 双层收碗车
Double layer trolley For collecting dishes
材料(Material) : 不锈钢(SUS)304/201 0.8~1.2MM
规格(Dimensions) : 500*800*900MM



SKC 收辣车
Double layer trolley
材料(Material) : 不锈钢(SUS)304/201 0.8~1.2MM
规格(Dimensions) : 805*430*870MM(MIDDLE SIZE)
870*480*910MM(BIG SIZE)



DGGB 地沟盖板
Description:STEEL FLOOR GRATING
型号 (Model No): 尺寸/Dimensions:
DGGB-2525 250*250*120MM
DGGB-4725 470*250*120MM



LJT 垃圾桶
DESCRIPTION:GARBAGE
型号 (MODEL NO):
LJT-50 DIAMETER :380MM
CAPACITY:50L 395*540*630MM
LJT-75 DIAMETER :450MM
CAPACITY:75L 460*610*630MM
LJT-100 DIAMETER :450MM
CAPACITY:100L 460*610*720MM



YSFLQ-5040 油水分离器
DESCRIPTION:OIL SEPARATOR
尺寸/DIMENSIONS:500*400*350MM



BPC-24G 24层饼盘车
2*12Layer of trolley
产品尺寸/Dimension (mm) : 785*460*1900
G/N pans size (mm) : 350*450



BPC-30G 30层饼盘车
2*15Layer of trolley
产品尺寸/Dimension (mm) : 550*745*1735
G/N pans size (mm) : 350*450



ZZSCFBGHJ 组装四层方腿平板货架
FOUR-LAYER SHELF WITH SQUARE LEGS
材料(MATERIAL):SUS304/201 0.8~1.2MM

型号 MODEL NO.	尺寸Dimension(MM)	包装Packing Size(M)
ZZSCHJ-1050	1000×500×1800	1.03×0.53×0.30
ZZSCHJ-1250	1200×500×1800	1.23×0.53×0.30
ZZSCHJ-1450	1400×500×1800	1.43×0.53×0.30
ZZSCHJ-1550	1500×500×1800	1.53×0.53×0.30
ZZSCHJ-1650	1600×500×1800	1.63×0.53×0.30
ZZSCHJ-1850	1800×500×1800	1.83×0.53×0.30
ZZSCHJ-2050	2000×500×1800	2.03×0.53×0.30
ZZSCHJ-1040	1000×400×1800	1.03×0.43×0.30
ZZSCHJ-1240	1200×400×1800	1.23×0.43×0.30
ZZSCHJ-1440	1400×400×1800	1.43×0.43×0.30
ZZSCHJ-1540	1500×400×1800	1.53×0.43×0.30
ZZSCHJ-1640	1600×400×1800	1.63×0.43×0.30
ZZSCHJ-1840	1800×400×1800	1.83×0.43×0.30
ZZSCHJ-2040	2000×400×1800	2.03×0.43×0.30

3、4、5layer shelf all available



ZZSCPBHJ 组装四层平板货架
FOUR-LAYER SHELF

材料(MATERIAL):SUS304/201 0.8~1.2MM

型号 MODEL NO.	尺寸Dimension(MM)	包装尺寸Packing Size(M)
ZZSCPBHJ-1050	1000×500×1800	1.03×0.53×0.2
ZZSCPBHJ-1250	1200×500×1800	1.23×0.53×0.2
ZZSCPBHJ-1450	1400×500×1800	1.43×0.53×0.2
ZZSCPBHJ-1550	1500×500×1800	1.53×0.53×0.2
ZZSCPBHJ-1650	1600×500×1800	1.63×0.53×0.2
ZZSCPBHJ-1850	1800×500×1800	1.83×0.53×0.2
ZZSCPBHJ-2050	2000×500×1800	2.03×0.53×0.2
ZZSCPBHJ-1040	1000×400×1800	1.03×0.43×0.2
ZZSCPBHJ-1240	1200×400×1800	1.23×0.43×0.2
ZZSCPBHJ-1440	1400×400×1800	1.43×0.43×0.2
ZZSCPBHJ-1540	1500×400×1800	1.53×0.43×0.2
ZZSCPBHJ-1640	1600×400×1800	1.63×0.43×0.2
ZZSCPBHJ-1840	1800×400×1800	1.83×0.43×0.2
ZZSCPBHJ-2040	2000×400×1800	2.03×0.43×0.2

3、4、5layer shelf all available



ZZSCCKHJ 组装四层冲孔货架
FOUR-LAYER SHELF WITH PUNCHED HOLE
材料(MATERIAL):SUS304/201 0.8~1.2MM

型号 MODEL NO.	尺寸Dimension(MM)	包装Packing Size
ZZSCCKHJ-1050	1000×500×1800	1.03×0.53×0.2
ZZSCCKHJ-1250	1200×500×1800	1.23×0.53×0.2
ZZSCCKHJ-1450	1400×500×1800	1.43×0.53×0.2
ZZSCCKHJ-1550	1500×500×1800	1.53×0.53×0.2
ZZSCCKHJ-1650	1600×500×1800	1.63×0.53×0.2
ZZSCCKHJ-1850	1800×500×1800	1.83×0.53×0.2
ZZSCCKHJ-2050	2000×500×1800	2.03×0.53×0.2

3、4、5layer shelf all available



ZZSCHJ-BZ 组装四层货架 (高度可调节)
FOUR-LAYER SHELF WITH HEIGHT ADJUSTABLE
材料(MATERIAL):SUS304/201 0.8~1.2MM

型号 MODEL NO.	尺寸Dimension(MM)	包装Packing Size(M)
ZZSCHJ-1050BZ	1000×500×1800	1.03×0.53×0.2
ZZSCHJ-1250BZ	1200×500×1800	1.23×0.53×0.2
ZZSCHJ-1450BZ	1400×500×1800	1.43×0.53×0.2
ZZSCHJ-1550BZ	1500×500×1800	1.53×0.53×0.2
ZZSCHJ-1650BZ	1600×500×1800	1.63×0.53×0.2
ZZSCHJ-1850BZ	1800×500×1800	1.83×0.53×0.2
ZZSCHJ-2050BZ	2000×500×1800	2.03×0.53×0.2
ZZSCHJ-1040BZ	1000×400×1800	1.03×0.43×0.2
ZZSCHJ-1240BZ	1200×400×1800	1.23×0.43×0.2
ZZSCHJ-1440BZ	1400×400×1800	1.43×0.43×0.2
ZZSCHJ-1540BZ	1500×400×1800	1.53×0.43×0.2
ZZSCHJ-1640BZ	1600×400×1800	1.63×0.43×0.2
ZZSCHJ-1840BZ	1800×400×1800	1.83×0.43×0.2
ZZSCHJ-2040BZ	2000×400×1800	2.03×0.43×0.2

3、4、5layer shelf all available



ZZSCHGHJ 组装四层花格货架
FOUR-LAYER LADDER TYPE SHELF
材料(MATERIAL):SUS304/201 0.8~1.2MM

型号 MODEL NO.	尺寸Dimension(MM)	包装Packing Size(M)
ZZSCHGHJ-1050	1000×500×1800	1.03×0.53×0.2
ZZSCHGHJ-1250	1200×500×1800	1.23×0.53×0.2
ZZSCHGHJ-1450	1400×500×1800	1.43×0.53×0.2
ZZSCHGHJ-1550	1500×500×1800	1.53×0.53×0.2
ZZSCHGHJ-1650	1600×500×1800	1.63×0.53×0.2
ZZSCHGHJ-1850	1800×500×1800	1.83×0.53×0.2
ZZSCHGHJ-2050	2000×500×1800	2.03×0.53×0.2
ZZSCHGHJ-1040	1000×400×1800	1.03×0.43×0.2
ZZSCHGHJ-1240	1200×400×1800	1.23×0.43×0.2
ZZSCHGHJ-1440	1400×400×1800	1.43×0.43×0.2
ZZSCHGHJ-1540	1500×400×1800	1.53×0.43×0.2
ZZSCHGHJ-1640	1600×400×1800	1.63×0.43×0.2
ZZSCHGHJ-1840	1800×400×1800	1.83×0.43×0.2
ZZSCHGHJ-2040	2000×400×1800	2.03×0.43×0.2

3、4、5layer shelf all available



GQJ-1组装挂墙架

SINGLE LAYER WALL SHELF

材料(MATERIAL):SUS304/201 0.8~1.2MM

型号 MODEL NO.	尺寸Dimension(MM)	包装尺寸Packing Size(M)
GQJ-1-1040	1000×400×600	1.1×0.50×1.0(10 PCS)
GQJ-1-1240	1200×400×600	1.3×0.50×1.0(10 PCS)
GQJ-1-1440	1400×400×600	1.5×0.50×1.0(10 PCS)
GQJ-1-1540	1500×400×600	1.6×0.50×1.0(10 PCS)
GQJ-1-1640	1600×400×600	1.7×0.50×1.0(10 PCS)
GQJ-1-1840	1800×400×600	1.9×0.50×1.0(10 PCS)
GQJ-1-2040	2000×400×600	2.1×0.50×1.0(10 PCS)
GQJ-1-1030	1000×300×600	1.1×0.40×1.0(10 PCS)
GQJ-1-1230	1200×300×600	1.3×0.40×1.0(10 PCS)
GQJ-1-1430	1400×300×600	1.5×0.40×1.0(10 PCS)
GQJ-1-1530	1500×300×600	1.6×0.40×1.0(10 PCS)
GQJ-1-1630	1600×300×600	1.7×0.40×1.0(10 PCS)
GQJ-1-1830	1800×300×600	1.9×0.40×1.0(10 PCS)
GQJ-1-2030	2000×300×600	2.1×0.40×1.0(10 PCS)



PZJ-100挂式盘子架

Hung Up Shelf For Plate

规格(Dimensions): 1000×250×(350+100) mm
材料(Material): 不锈钢(SUS)304/201 0.8~1.2mm
可订做800/1000/1200/1500mm



GQJ-2组装挂墙架

DOUBLE LAYER WALL SHELF

材料MATERIAL:SUS304/201 0.8~1.2MM

型号 MODEL NO.	尺寸Dimension(MM)	包装尺寸Packing Size(M)
GQJ-2-1040	1000×400×600	1.1×0.50×1.0(10 PCS)
GQJ-2-1240	1200×400×600	1.3×0.50×1.0(10 PCS)
GQJ-2-1440	1400×400×600	1.5×0.50×1.0(10 PCS)
GQJ-2-1540	1500×400×600	1.6×0.50×1.0(10 PCS)
GQJ-2-1640	1600×400×600	1.7×0.50×1.0(10 PCS)
GQJ-2-1840	1800×400×600	1.9×0.50×1.0(10 PCS)
GQJ-2-2040	2000×400×600	2.1×0.50×1.0(10 PCS)
GQJ-2-1030	1000×300×600	1.1×0.40×1.0(10 PCS)
GQJ-2-1230	1200×300×600	1.3×0.40×1.0(10 PCS)
GQJ-2-1430	1400×300×600	1.5×0.40×1.0(10 PCS)
GQJ-2-1530	1500×300×600	1.6×0.40×1.0(10 PCS)
GQJ-2-1630	1600×300×600	1.7×0.40×1.0(10 PCS)
GQJ-2-1830	1800×300×600	1.9×0.40×1.0(10 PCS)
GQJ-2-2030	2000×300×600	2.1×0.40×1.0(10 PCS)



ZZDCQJ-90/120/150/180组单层墙架

Wall shelf with G/N pans

尺寸/Dimension(mm): 900*300 1800*300
1200*300 1500*300

材料/Material : SUS201 or 304 0.8-1.2MM



GQJ-120/150/180管式墙架 (两侧圆弧板)

Wall shelf

尺寸/Dimension(mm): 1200*300*200
1500*300*200
1800*300*200

材料/Material : SUS201 or 304 0.8-1.2MM



SDTC 份数盘台带盖子

SALAD STATION WITH COVER AND FEET

材料MATERIAL:SUS304/201 0.8~1.2MM

型号 MODEL NO.	尺寸Dimension(MM)	包装尺寸Packing Size(M)
SDTC-414	800*310*265	0.9×0.40×0.4
SDTC-614	1200*310*265	1.3×0.40×0.4
SDTC-814	1600*310*265	1.7×0.40×0.4
SDTC-214	2000*310*265	2.1×0.40×0.4



SDT 份数盘台不带盖子

SALAD STATION WITHOUT COVER WITH FEET

材料MATERIAL:SUS304/201 0.8~1.2MM

型号 MODEL NO.	尺寸Dimension(MM)	包装尺寸Packing Size(M)
SDT-100	1000*310*220	1.1×0.40×0.3
SDT-120	1200*310*220	1.3×0.40×0.3
SDT-160	1600*310*220	1.7×0.40×0.3
SDT-180	1800*310*220	1.9×0.40×0.3



TMLJ-120/150双层台面立架带卡扣

Overshelf for working table

尺寸/Dimension(mm): 1200*320*700
1500*320*700

材料/Material : SUS201 or 304 0.8-1.2MM

抽屉柜和拐角柜系列

Drawer cabinet and corner cabinet series

广杰厨业有限公司

因为专业 所以卓越



请扫描二维码添加微信



SCCTG 双层抽屉不带背

Free standing two drawers cabinet without splash back

材料(Material): 不锈钢(SUS)304/201 1.0~1.5mm

型号Model NO. 尺寸Dimension
SCCTG-5060 500*600*850MM
SCCTG-5070 500*700*850MM



SCCTG 双层抽屉带背

Free standing two drawers cabinet with splash back

材料(Material): 不锈钢(SUS)304/201 1.0~1.5mm

型号Model NO. 尺寸Dimension
SCCTG-5060WS 500*600*850+100MM
SCCTG-5070WS 500*700*850+100MM



LCCTG 六层抽屉不带背

Cupboard with 6 drawers without splashback

材料(Material): 不锈钢(SUS)304/201 1.0~1.5mm

型号Model NO. 尺寸Dimension
LCCTG-1060 1000*600*850MM
LCCTG-1070 1000*700*850MM



LCCTG 六层抽屉带背

Cupboard with 6 drawers with splashback

材料(Material): 不锈钢(SUS)304/201 1.0~1.5mm

型号Model NO. 尺寸Dimension
LCCTG-1060WS 1000*600*850+100MM
LCCTG-1070WS 1000*700*850+100MM



TCCTG 三层抽屉不带背

Free standing three drawers cabinet without splash back

材料(Material): 不锈钢(SUS)304/201 1.0~1.5mm

型号Model NO. 尺寸Dimension
TCCTG-5060 500*600*850MM
TCCTG-5070 500*700*850MM



TCCTG 三层抽屉带背

Free standing three drawers cabinet with splash back

材料(Material): 不锈钢(SUS)304/201 1.0~1.5mm

型号Model NO. 尺寸Dimension
TCCTG-5060WS 500*600*850+100MM
TCCTG-5070WS 500*700*850+100MM



GJG-WS 拐角柜带背

Corner cabinet with splash back

材料(Material): 不锈钢(SUS)304/201 1.0~1.5mm

型号Model NO. 尺寸Dimension
GJG-7010WS 700*1000+1000*700*850+100MM
GJG-6010WS 600*1000+1000*600*850+100MM



GJG 拐角柜不带背

Corner cabinet without splash back

材料(Material): 不锈钢(SUS)304/201 1.0~1.5mm

型号Model NO. 尺寸Dimension
GJG-7010 700*1000+1000*700*850MM
GJG-6010 600*1000+1000*600*850MM



FCCTG 四层抽屉不带背

Free standing four drawers cabinet without splash back

材料(Material): 不锈钢(SUS)304/201 1.0~1.5mm

型号Model NO. 尺寸Dimension
FCCTG-5060 500*600*850MM
FCCTG-5070 500*700*850MM



FCCTG 四层抽屉带背

Free standing four drawers cabinet with splash back

材料(Material): 不锈钢(SUS)304/201 1.0~1.5mm

型号Model NO. 尺寸Dimension
FCCTG-5060WS 500*600*850+100MM
FCCTG-5070WS 500*700*850+100MM



请扫描二维码添加微信



CMDG 敞门吊柜
HUNG UP STYLE STORAGE CABINET WITH PULL-PUSH DOORS

型号Model NO.	尺寸Dimension	包装尺寸Packing Size
CMDG-100	1000*400*650MM	1.1*0.5*0.75M
CMDG-120	1200*400*650MM	1.3*0.5*0.75M
CMDG-140	1400*400*650MM	1.5*0.5*0.75M
CMDG-150	1500*400*650MM	1.6*0.5*0.75M
CMDG-160	1600*400*650MM	1.7*0.5*0.75M
CMDG-180	1800*400*650MM	1.9*0.5*0.75M
CMDG-200	2000*400*650MM	2.1*0.5*0.75M



DCMG 单敞门食品柜

Cabinet with single hinged door
材料(Material): 不锈钢(SUS)304/201 0.8~1.2MM
规格(Dimensions):
DCMG-6060 600*600*1800MM
DCMG-6070 600*700*1800MM



SCMG 双敞门食品柜

Cabinet with double hinged doors
材料(Material): 不锈钢(SUS)304/201 0.8~1.2MM
规格(Dimensions):
SCMG-1250 1200*500*1800MM
SCMG-1250 1200*600*1800MM
SCMG-1060 1000*600*1800MM
SCMG-1070 1000*700*1800MM



LMDG 拉门吊柜

Wall cabinet with middle shelf with sliding doors

型号Model NO.	尺寸Dimension	包装尺寸Packing Size
LMDG-100	1000*400*650MM	1.1*0.5*0.75M
LMDG-120	1200*400*650MM	1.3*0.5*0.75M
LMDG-140	1400*400*650MM	1.5*0.5*0.75M
LMDG-150	1500*400*650MM	1.6*0.5*0.75M
LMDG-160	1600*400*650MM	1.7*0.5*0.75M
LMDG-180	1800*400*650MM	1.9*0.5*0.75M
LMDG-200	2000*400*650MM	2.1*0.5*0.75M



SMLM 四门拉门食品柜

Cabinet with four sliding doors
材料(Material): 不锈钢(SUS)304/201 0.8~1.2MM
型号Model NO. 尺寸Dimension
SMLM-1060 1000*600*1800MM
SMLM-1260 1200*600*1800MM
SMLM-1460 1400*600*1800MM
SMLM-1660 1600*600*1800MM
SMLM-1070 1000*700*1800MM
SMLM-1270 1200*700*1800MM
SMLM-1470 1400*700*1800MM
SMLM-1670 1600*700*1800MM



SLMG 双拉门食品柜

Cabinet with double sliding doors
材料(Material): 不锈钢(SUS)304/201 0.8~1.2MM
型号Model NO. 尺寸Dimension
SLMG-1060 1000*600*1800MM
SLMG-1260 1200*600*1800MM
SLMG-1460 1400*600*1800MM
SLMG-1660 1600*600*1800MM
SLMG-1070 1000*700*1800MM
SLMG-1270 1200*700*1800MM
SLMG-1470 1400*700*1800MM
SLMG-1670 1600*700*1800MM



ZZLMDG 组装拉门吊柜

Detachable design hungup storage cabinet with sliding doors

型号Model NO.	尺寸Dimension	包装尺寸Packing Size
ZZLMDG-100	1000*400*650MM	1.1*0.5*0.3M
ZZLMDG-120	1200*400*650MM	1.3*0.5*0.3M
ZZLMDG-140	1400*400*650MM	1.5*0.5*0.3M
ZZLMDG-150	1500*400*650MM	1.6*0.5*0.3M
ZZLMDG-160	1600*400*650MM	1.7*0.5*0.3M
ZZLMDG-180	1800*400*650MM	1.9*0.5*0.3M
ZZLMDG-200	2000*400*650MM	2.1*0.5*0.3M



KKG 开口吊柜

Wall mounted cabinet without door with 1 layer middle shelf

型号Model NO.	尺寸Dimension	包装尺寸Packing Size
KKG-640	600*400*650MM	0.7*0.5*0.75M
KKG-840	800*400*650MM	0.9*0.5*0.75M
KKG-1040	1000*400*650MM	1.1*0.5*0.75M
KKG-1240	1200*400*650MM	1.3*0.5*0.75M
KKG-1440	1400*400*650MM	1.5*0.5*0.75M
KKG-1640	1600*400*650MM	1.7*0.5*0.75M
KKG-1840	1800*400*650MM	1.9*0.5*0.75M
KKG-2040	2000*400*650MM	2.1*0.5*0.75M



请扫描二维码添加微信



YZ-YW 新款油网烟罩

Exhaust Hood
材料(Material):
不锈钢(SUS)304/201 1.0~1.5MM
定制尺寸



Packing size height : From 1.2 M to be 0.2M

CFZ 抽风罩
Description:Exhaust hood(Flat packed)
型号(Model No): 尺寸/Dimensions:
CFZ-3012 3000*1200*530/380
CFZ-4012 4000*1200*530/380
CFZ-5012 5000*1200*530/380
CFZ-6012 6000*1200*530/380



新款烟罩
Flat packed exhaust hood
型号 (Model No.) :
BZYZ-100 BZYZ-120
BZYZ-140 BZYZ-160
BZYZ-180 BZYZ-200

产品尺寸 (Dimension MM) :
1000*530*915 1200*530*915
1400*530*915 1600*530*915
1800*530*915 2000*530*915
材料 (Material) : 不锈钢SUS201/304 1.0-1.5MM

定制尺寸

Advantage : Flat packed. Packing size around 0.15-0.3 CBM .
Saving cost for transportation



YZ油网烟罩
EXHAUST HOOD

材料(MATERIAL):SUS304/201 0.8~1.2MM

型号 MODEL NO.	尺寸Dimension(MM)	包装尺寸Packing Size(M)
YZ-1010	1000×1000×500	1.1×1.1×0.6
YZ-1210	1200×1000×500	1.3×1.1×0.6
YZ-1410	1400×1000×500	1.5×1.1×0.6
YZ-1510	1500×1000×500	1.6×1.1×0.6
YZ-1610	1600×1000×500	1.7×1.1×0.6
YZ-1810	1800×1000×500	1.9×1.1×0.6
YZ-2010	2000×1000×500	2.1×1.1×0.6
YZ-1090	1000×900×500	1.1×1.0×0.6
YZ-1290	1200×900×500	1.3×1.0×0.6
YZ-1490	1400×900×500	1.5×1.0×0.6
YZ-1590	1500×900×500	1.6×1.0×0.6
YZ-1690	1600×900×500	1.7×1.0×0.6
YZ-1890	1800×900×500	1.9×1.0×0.6
YZ-2090	2000×900×500	2.1×1.0×0.6



YWYZ油网烟罩
EXHAUST HOOD

材料(MATERIAL):SUS304/201 0.8~1.2MM

型号 MODEL NO.	尺寸Dimension(MM)	包装尺寸Packing Size(M)
YWYZ-1010	1000×1000×500	1.1×1.1×0.6
YWYZ-1210	1200×1000×500	1.3×1.1×0.6
YWYZ-1410	1400×1000×500	1.5×1.1×0.6
YWYZ-1510	1500×1000×500	1.6×1.1×0.6
YWYZ-1610	1600×1000×500	1.7×1.1×0.6
YWYZ-1810	1800×1000×500	1.9×1.1×0.6
YWYZ-2010	2000×1000×500	2.1×1.1×0.6
YWYZ-1090	1000×900×500	1.1×1.0×0.6
YWYZ-1290	1200×900×500	1.3×1.0×0.6
YWYZ-1490	1400×900×500	1.5×1.0×0.6
YWYZ-1590	1500×900×500	1.6×1.0×0.6
YWYZ-1690	1600×900×500	1.7×1.0×0.6
YWYZ-1890	1800×900×500	1.9×1.0×0.6
YWYZ-2090	2000×900×500	2.1×1.0×0.6



YZ 欧式烟罩
EXHAUST HOOD

材料(MATERIAL):SUS304/201 0.8~1.2MM

型号 MODEL NO.	尺寸Dimension(MM)	包装尺寸Packing Size(M)
YZ-1070	1000×700×450	1.1×0.8×0.55
YZ-1570	1500×700×450	1.6×0.8×0.55
YZ-2070	2000×700×450	2.1×0.8×0.55
YZ-2570	2500×700×450	2.6×0.8×0.55
YZ-3070	3000×700×450	3.1×0.8×0.55



YZBZ-550/440/454/450/540烟罩篮子
Filter for the exhaust hood

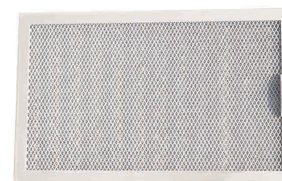
尺寸/Dimension (MM):500*500*20
400*450*20
450*450*20
400*500*20
500*400*20

材质/Material: SUS201/304 0.8-1.2MM



YZ-22XKYW 新款油网烟罩

Exhaust Hood
材料(Material):
不锈钢(SUS)304/201 1.0~1.5MM
尺寸(SIZE):3100×1050×715MM



FSBZ-254/540 烟罩篮子
Filter for the exhaust hood
尺寸/Dimension (MM):450*450*20
250*400*25
500*400*25

材质/Material: SUS201/304 0.8-1.2MM



BZ-550/440/454 烟罩篮子
Filter for the exhaust hood
尺寸/Dimension (MM):500*500*20
400*400*20
450*450*20

材质/Material: SUS201/304 0.8-1.2MM



BZ-450 烟罩篮子
Filter for the exhaust hood
尺寸/Dimension(MM):400*500*20
450*500*20

材质/Material:SUS201/304 0.8-1.2MM



HHBXT-150/180/210豪华保鲜售饭台

Luxurious style cooling show case and refrigerator cabinet

规格(Dimensions) : 1500×700×850+500mm
1800×700×850+500mm
2100×700×850+500mm

功率(power) : 0.3kw

温度范围(Temperature Range) : 0°C-8°C

冰箱温度refrigerator (Temperature Range) : 0°C~-5°C

分数盘(Pans) : 4×1/1(150mm)分数盘 (Pans)

材料(Material) : 不锈钢(SUS)304/201 0.8~1.2mm
钢化玻璃5mm



HHBWT-150/180/210豪华保温售饭台

Luxurious style electric bain marie with glass

尺寸/Dimension(mm):1500x700x850+500
1800x700x850+500
2100x700x850+500

材料(Material) : 不锈钢(SUS)304/201 0.8~1.2mm

HHBXF-150/180/210新款时尚豪华保鲜台

New fashion style
COOLING SHOW CASE AND REFRIGERATOR CABINET

尺寸/Dimension(mm):1500x700x850+500
1800x700x850+500
2100x700x850+500

材料(Material) : 不锈钢(SUS)304/201 0.8~1.2mm

HHBWF-120/150/180/210

新款时尚豪华保温售饭台

New fashion style electric bain marie with glass

尺寸/Dimension(mm): 1200*700+300*850+500
1500*700+300*850+500
1800*700+300*850+500
2100*700+300*850+500

材料/Material : 不锈钢(SUS)304/201 0.8~1.2mm



HHBXS-150/180/210伞状豪华风冷保鲜台

Umbrella style cooling show case and refrigerator cabinet

尺寸/Dimension(mm):1500x700x850+500
1800x700x850+500
2100x700x850+500

材料(Material) : 不锈钢(SUS)304/201 0.8~1.2mm



SFT-5 五格分控售饭台

SFT-5 Bain Marin with 5 separate control

尺寸/Dimension(mm) : 2100×750×850+450

材料(Material) : 不锈钢(SUS)304/201 1.0~1.5mm

FIVE THERMOSTAT WITH INDIVIDUAL
TEMPERATURE INDICATION



HHBWS-120/150/180伞状玻璃式保温售饭台

Umbrella style electric bain marie with glass

尺寸/Dimension(mm): 1200*700+300*850+500
1500*700+300*850+500
1800*700+300*850+500
2100*700+300*850+500

材料/Material : 不锈钢(SUS)304/201 0.8~1.2mm



请扫描二维码添加微信



XHHBX-150/180/210保鲜台 (玻璃全封闭)
Glass culved luxury cooling show case and refrigerator cabinet (Glass covered)

尺寸/Dimension(mm): 1500*700*850+500
1800*700*850+500
2100*700*850+500

功率/Power: XHHBX-150(320W)
XHHBX-180(360W)
XHHBX-210(360W)



JYBW 简易保温台

ELECTRIC BAIN MARIE WITH LOWER SHELF

功率(Power):3.5KW

材料(Material) : 不锈钢(SUS)304/201 0.8~1.2MM

规格(Dimensions)(mm) :

3 PANS JYBW-120 1200×(700+300)×850

4 PANS JYBW-150 1500×(700+300)×850

5 PANS JYBW-180 1800×(700+300)×850

6 PANS JYBW-210 2100×(700+300)×850



GSBWNDT保温汤池带暖碟

Electric bain marie with dish warmer without galls

材料(Material) : 不锈钢(SUS)304/201 0.8~1.5MM

3 PANS GSBWNDT-120 1200×(700+300)×850

4 PANS GSBWNDT-150 1500×(700+300)×850

5 PANS GSBWNDT-180 1800×(700+300)×850

6 PANS GSBWNDT-210 2100×(700+300)×850



SFT-ZZ 自助熟饭柜

Bain Marie with dish warmer cabinet

尺寸/Dimension(mm) :

SFT-150ZZ 1500×700(500)×800(500)

SFT-180ZZ 1800×700(500)×800(500)

材料(Material) : 不锈钢(SUS)304/201 1.0~1.5MM

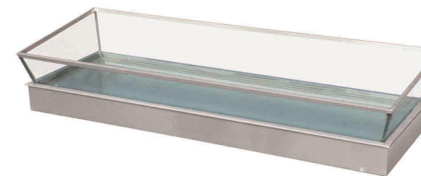


PCT-180高级配菜台

WORKING TABLE MULTIFUNCTION WITH ONE CHOPPING BOARD

规格Size(MM) : 1800×700×(850+100)

材料Material : 不锈钢SUS 304/201 0.8~1.2MM



BP-1040冰盆

ICEBOX FOR SHOWING SEAFOOD

规格(Dimensions) : 1000X400X115mm

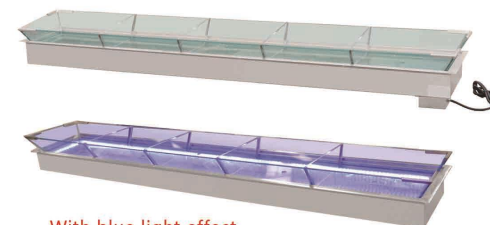
材料(Material) : 不锈钢(SUS)304/201 0.8~1.5MM



BP-8045 冰盆

Description:Ice Basin

尺寸/Dimensions:800*450*300MM



BP-2040冰盆

ICEBOX FOR SHOWING SEAFOOD

规格(Dimensions) : 2000X400X115mm

材料(Material) : 不锈钢(SUS)304/201 0.8~1.5MM

With blue light effect